



CAROL GAY



COLEÇÃO – CAROL GAY

As formas geométricas acompanham a designer Carol Gay desde pequena. Sua memória afetiva se relaciona com tudo o que está a sua volta, ressignificando o urbano e o natural. Nesse sentido, surge a releitura de materiais ousados e experimentais.

Las formas geométricas han acompañado a la diseñadora Carol Gay desde que era niña. Su memoria emocional se relaciona con todo lo que la rodea, resignificando lo urbano y lo natural. En este sentido, surge la reinterpretación de materiales osados y experimentales.

Geometric shapes have been with designer Carol Gay since she was little. Her affective memory relates to everything around her, giving new meaning to the urban and the natural. In this sense, the reinterpretation of innovative and experimental materials emerges.



Entrevista

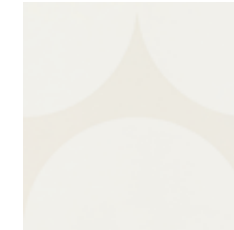


BOLA



19x19cm / 7"x7"
AC • BIII • V1
WRC, WWS

CAROL GAY
BOLA CIRRUS



CAROL GAY
BOLA CÚMULUS



CAROL GAY
BOLA PISTACHE



CAROL GAY
BOLA ESMERALDA



CAROL GAY
BOLA ÁGUA-VIVA



CAROL GAY
BOLA FLAMINGO



CAROL GAY
BOLA ATACAMA



CAROL GAY
BOLA TARA



CAROL GAY
BOLA LUA



CAROL GAY
BOLA NETUNO



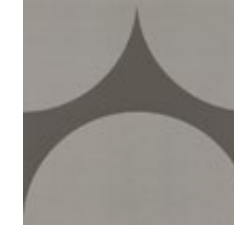
CAROL GAY
BOLA CAPUCCINO NEW 2025



CAROL GAY
BOLA CHOCOLATE NEW 2025



CAROL GAY
BOLA STRATUS



CAROL GAY
BOLA NIMBO



CAROL GAY
BOLA DIA



CAROL GAY
BOLA NOITE



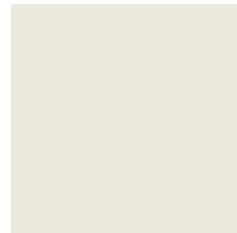


CAROL GAY



15x15cm / 6"x6"
AC • COF II • Bla • V1
FLC, FWI, WWS, WFA

CAROL GAY
CÚMULUS NEW 2025



CAROL GAY
FLAMINGO NEW 2025



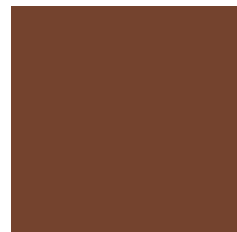
CAROL GAY
ESMERALDA NEW 2025



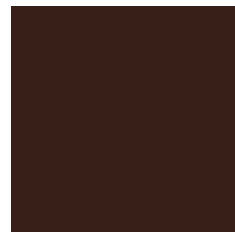
CAROL GAY
SELVA NEW 2025



CAROL GAY
TARA NEW 2025



CAROL GAY
CHOCOLATE NEW 2025



CAROL GAY
NETUNO NEW 2025



CAROL GAY
NIMBO NEW 2025



TRAÇO

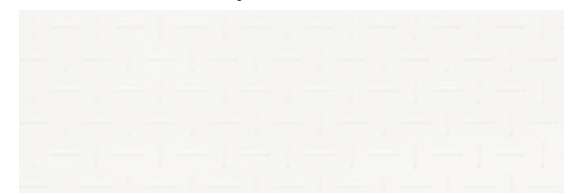


30x90cm / 12"x36"
AC • BIII • V1
WRC, WWS

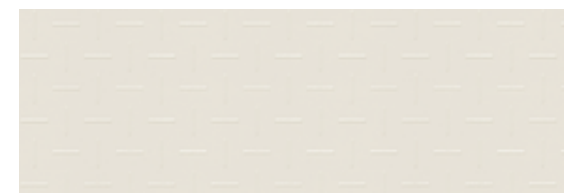
CAROL GAY TRAÇO DIA



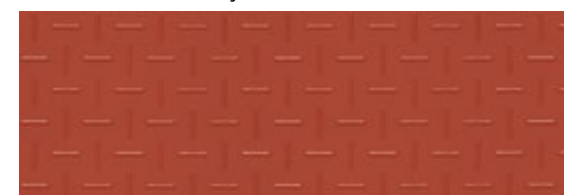
CAROL GAY TRAÇO SAL



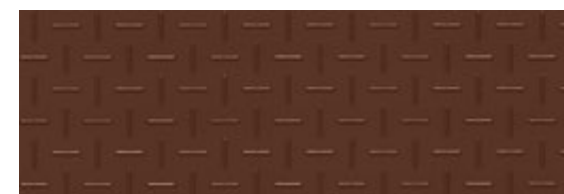
CAROL GAY TRAÇO NATA



CAROL GAY TRAÇO CAMELO



CAROL GAY TRAÇO CHOCOLATE



CAROL GAY TRAÇO SELVA



CAROL GAY TRAÇO CARVÃO



29x29cm / 11"x11"
AC • BIII • V1
WRC, WWS

CAROL GAY TRAÇO DIA



CAROL GAY TRAÇO SAL



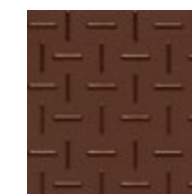
CAROL GAY TRAÇO NATA



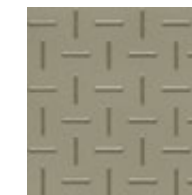
CAROL GAY TRAÇO CAMELO



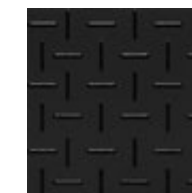
CAROL GAY TRAÇO CHOCOLATE



CAROL GAY TRAÇO SELVA NEW 2025



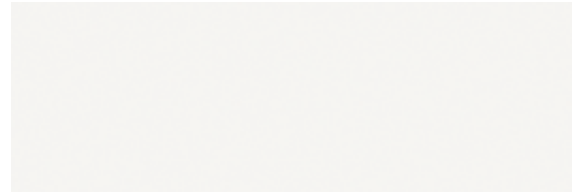
CAROL GAY TRAÇO CARVÃO



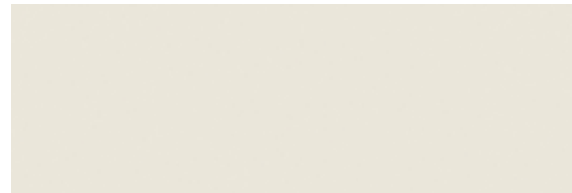


30x90cm / 12"x36"
AC • BIII • V1
WRC

CAROL GAY SAL



CAROL GAY NATA



CAROL GAY CARAMELO



CAROL GAY CHOCOLATE

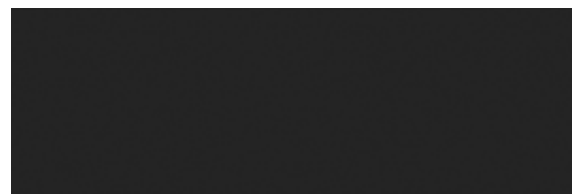


CAROL GAY SELVA

NEW
2025



CAROL GAY CARVÃO





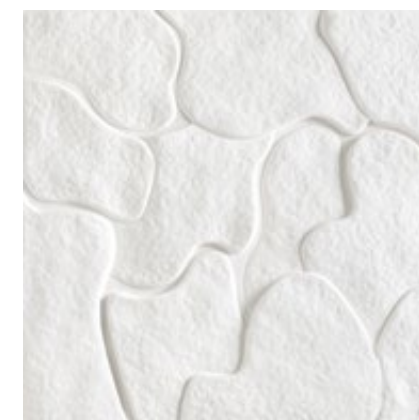
CASCA

EXCLUSIVO
black

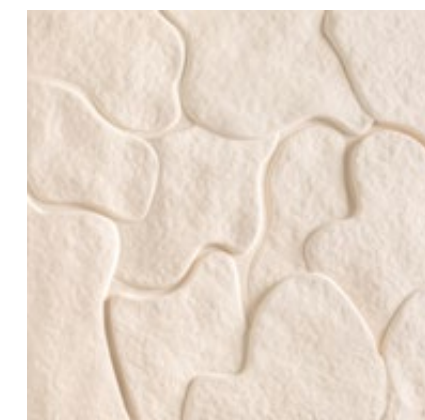


60x60cm / 24"x24"
V3 • WRC

CAROL GAY CASCA SAL



CAROL GAY CASCA MARAJÓ



CAROL GAY CASCA CHUVA



CAROL GAY CASCA SELVA



CAROL GAY CASCA PÁPRICA



CAROL GAY CASCA CARVÃO





RAÍZES

19x90cm / 7"x36"
V3 • WRC

CAROL GAY RAÍZES SAL



CAROL GAY RAÍZES NÉVOA



CAROL GAY RAÍZES GENGIBRE



CAROL GAY RAÍZES PÁPRICA



CAROL GAY RAÍZES CHUVA



CAROL GAY RAÍZES SELVA



CAROL GAY RAÍZES CARVÃO



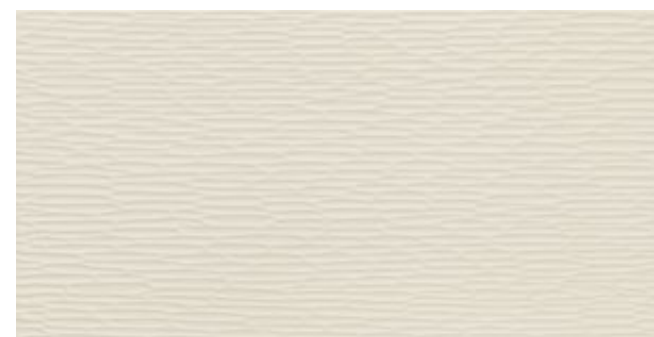
LASCAS



60x120cm / 24"x47"
MA • Bla • V1
WWS • WFA



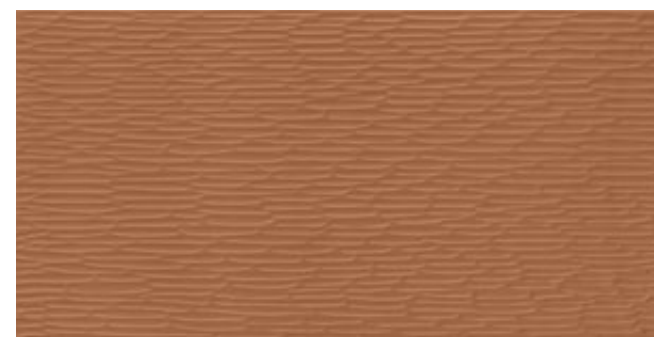
CAROL GAY LASCAS BRUMA



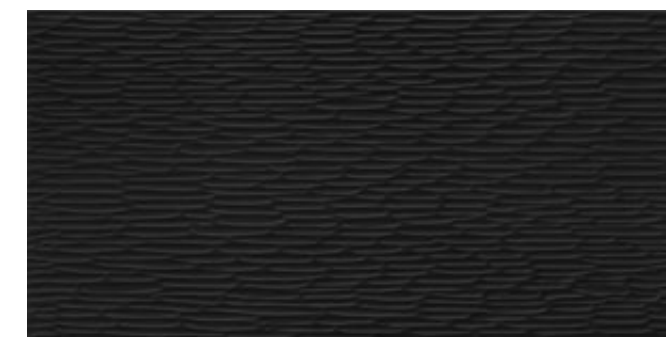
CAROL GAY LASCAS LINA



CAROL GAY LASCAS SAARA



CAROL GAY LASCAS CARVÃO



LANÇAMENTO
2025

COLEÇÃO – ALEXANDRIA

Alexandria é um tributo ao vidro moldado. Luz e matéria se encontram para criar formas em revestimentos que traduzem a essência de Alexandria, cidade-símbolo da nova coleção, cocriada por Carol Gay. Geometrias sutis, texturas inspiradas na natureza e transparências com interferências de cores vibrantes, capturam o efêmero, valorizando técnicas artesanais.

Alexandria is a tribute to molded glass. Light and matter meet to create shapes in coatings that translate the essence of Alexandria, the new collection's city of inspiration, co-created by Carol Gay. Subtle geometries, textures inspired by nature and transparencies with vibrant color interferences, capture the ephemeral, valuing artisanal techniques.

Alexandria es un homenaje al vidrio moldado. Luz y materia se unen para crear formas en revestimientos que traducen la esencia de Alejandría, la ciudad símbolo de la nueva colección, cocreada por Carol Gay. Geometrías sutiles, texturas inspiradas en la naturaleza y transparencias con vibrantes interferencias de color captan lo efímero, valorando las técnicas artesanales.



10x10cm / 4"x4"
BR • WRC

CAROL GAY
FLORA BRANCO
OPLAINO



NEW
2025

CAROL GAY
BOTÃO BRANCO
OPLAINO



NEW
2025

CAROL GAY
OCEANO BRANCO
OPLAINO



NEW
2025

CAROL GAY
VITRUM BRANCO
OPLAINO



NEW
2025

CAROL GAY
FLORA ÂMBAR



NEW
2025

CAROL GAY
BOTÃO ÂMBAR



NEW
2025

CAROL GAY
OCEANO ÂMBAR



NEW
2025

CAROL GAY
VITRUM ÂMBAR



NEW
2025

CAROL GAY
FLORA AMARELO



NEW
2025

CAROL GAY
BOTÃO AMARELO



NEW
2025

CAROL GAY
OCEANO AMARELO



NEW
2025

CAROL GAY
VITRUM AMARELO



NEW
2025

CAROL GAY
FLORA VERMELHO



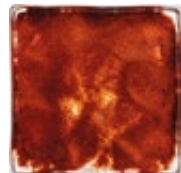
NEW
2025

CAROL GAY
BOTÃO VERMELHO



NEW
2025

CAROL GAY
OCEANO VERMELHO



NEW
2025

CAROL GAY
VITRUM VERMELHO



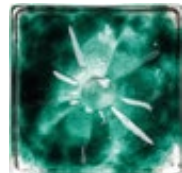
NEW
2025

CAROL GAY
FLORA VERDE
ESMERALDA



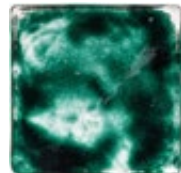
NEW
2025

CAROL GAY
BOTÃO VERDE
ESMERALDA



NEW
2025

CAROL GAY
OCEANO VERDE
ESMERALDA



NEW
2025

CAROL GAY
VITRUM VERDE
ESMERALDA



NEW
2025

CAROL GAY
FLORA PRETO



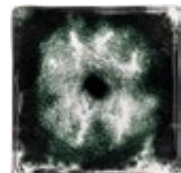
NEW
2025

CAROL GAY
BOTÃO PRETO



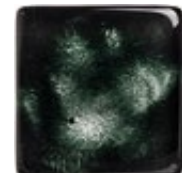
NEW
2025

CAROL GAY
OCEANO PRETO



NEW
2025

CAROL GAY
VITRUM PRETO



NEW
2025

ALEXANDRIA







PRÁTICAS RESPONSÁVEIS

A Decortiles possui iniciativas para promover a responsabilidade ambiental, com foco em áreas-chave de seu processo produtivo. Somos uma empresa comprometida com o monitoramento de nossos impactos. Dispomos de um relatório completo de Análise de Ciclo de Vida (ACV) e Pegada de Carbono, abrangendo informações detalhadas desde o berço até o túmulo. Acesse o QR Code e conheça outras dessas ações ambientais que merecem destaque.

*Alguns de nossos revestimentos têm como referência cores e texturas encontrados na natureza, reproduzindo visualmente os padrões de pedras, madeiras e outros materiais. Por isso, os textos conceituais de produtos têm liberdade criativa para fazer associações à natureza.



Decortiles posee iniciativas para promover la responsabilidad ambiental, centrándose en áreas clave de su proceso productivo. Somos una empresa comprometida con el monitoreo de nuestros impactos. Disponemos de un completo informe de Análisis del Ciclo de Vida (ACV) y de Huella de Carbono, que abarca información detallada desde la cuna hasta la tumba. Accede al código QR y descubre otras acciones ambientales que se destacan.

*Some of our coatings are based on colors and textures found in nature, visually reproducing the patterns of stones, hardwood, and other materials. Therefore, the conceptual texts of products have creative freedom to make associations with nature.

Decortiles has initiatives to foster environmental responsibility, focusing on key areas of its production process. We are a company committed to monitoring our impacts. We have a full Life Cycle Analysis (LCA) and Carbon Footprint report, covering thorough information from cradle to grave. Access the QR Code and learn about other of these environmental efforts worthy of note.

Algunos de nuestros revestimientos tienen como referencia colores y texturas que se encuentran en la naturaleza, reproduciendo visualmente los patrones de piedras, madera y otros materiales. Por lo tanto, los textos conceptuales de productos tienen libertad creativa para realizar asociaciones con la naturaleza.



DECORTILES

Rua Maximiliano Gaidzinski, 245
88845-000 . Cocal do Sul . SC . Brasil
+55 48 3447 7777

DECORTILES SÃO PAULO

Av. Brasil, 526. Jardim América
São Paulo . SP. CEP: 01430-000
+55 11 2122 7272

DECORTILES USA

2075 McDaniel Dr. Suite 110
Carrollton, 75006 . Texas . U.S.A
+1 972 4817854

 **DECORTILES**
DECORTILES.COM